

DATA SHEET

Survey **Machined Ferrites**

Product specification
Supersedes data of 1996 Jun 27
File under Ferrite Ceramics, MA01

2000 Apr 20

Machined Ferrites

Survey

MACHINED FERRITES AND SPECIALTY SHAPES

We stock most of our material grades in blocks and are able to machine numerous prototype cores. Very close tolerances can be realized if required.

Ferrites, being very hard and brittle are difficult to work. The machining and grinding of ferrites and similar materials to micron precision, places stringent requirements on machines and men. To attain optimum standards requires close cooperation between us, the manufacturers of the machines and the machine tools we use.

There are several reasons to choose machined ferrite cores. Samples are sometimes required on very short notice, while pressing tools are not yet available. On other occasions, only a limited number of cores will be needed and it is not worthwhile to make a tool at all. Cores can be so complicated or large that machining is the only viable solution.

Figures 1 to 5 provide a good impression of the variety of cores we have produced. For some of the cores we also have pressing tools available.

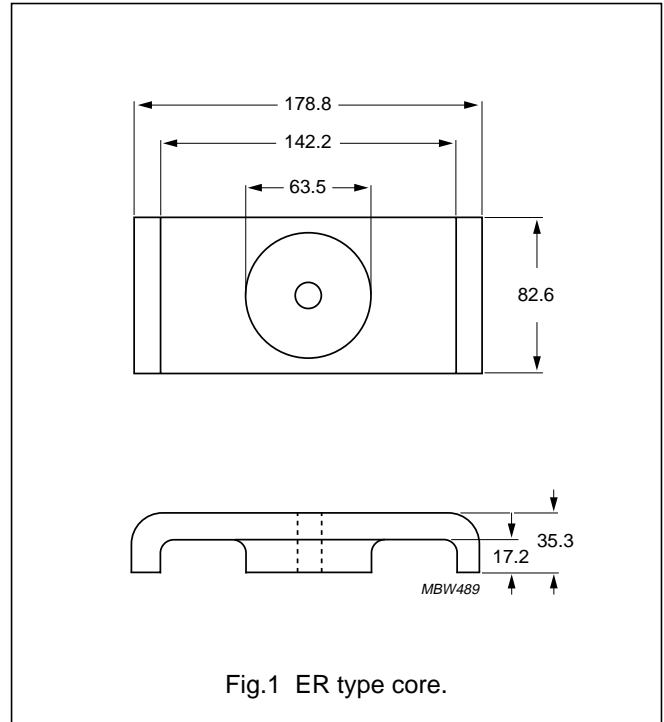


Fig.1 ER type core.

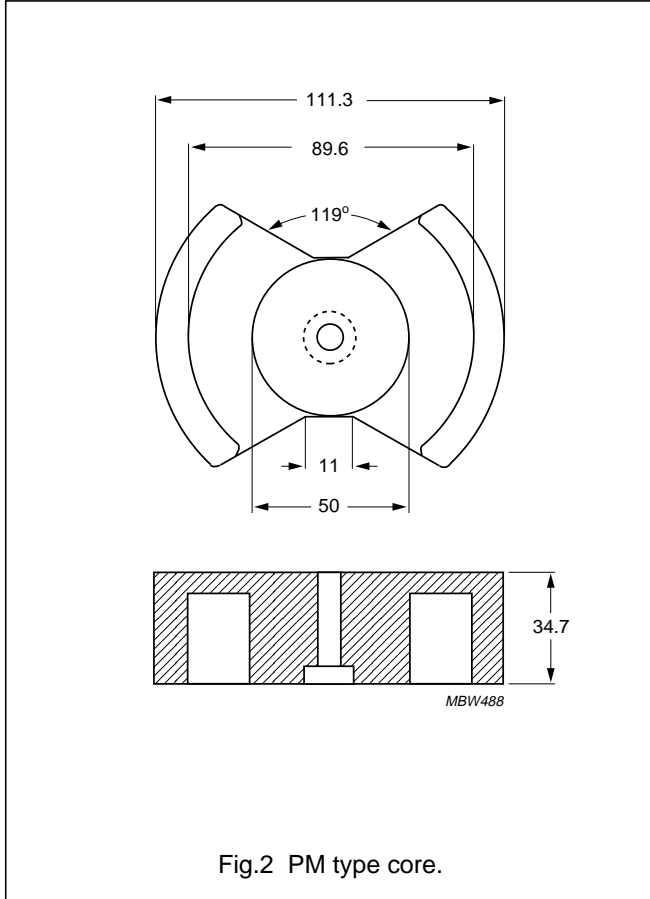


Fig.2 PM type core.

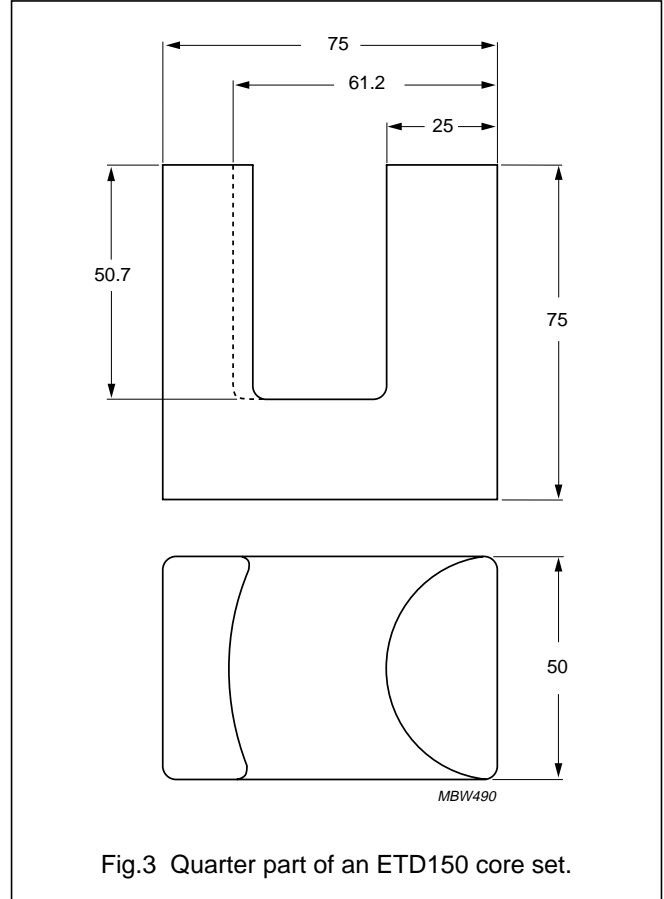
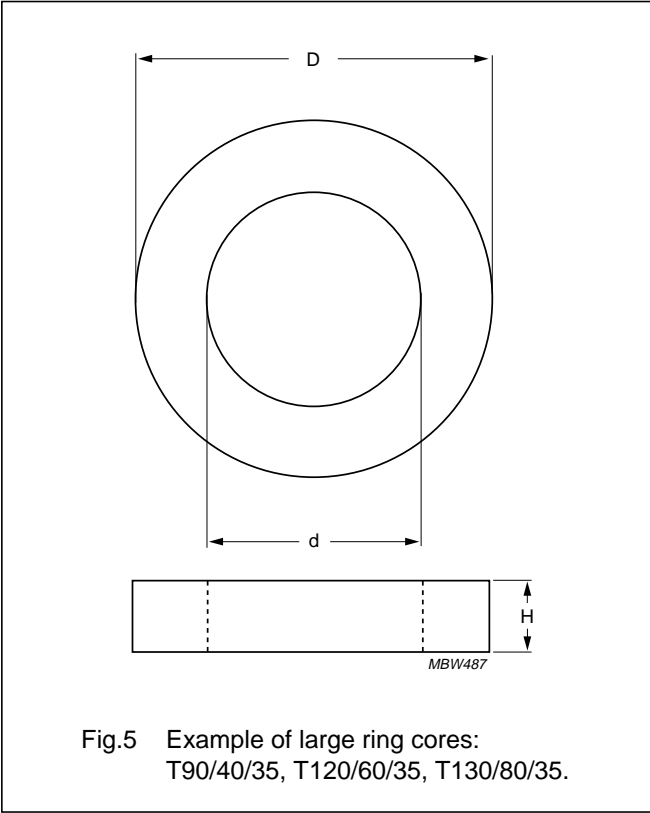
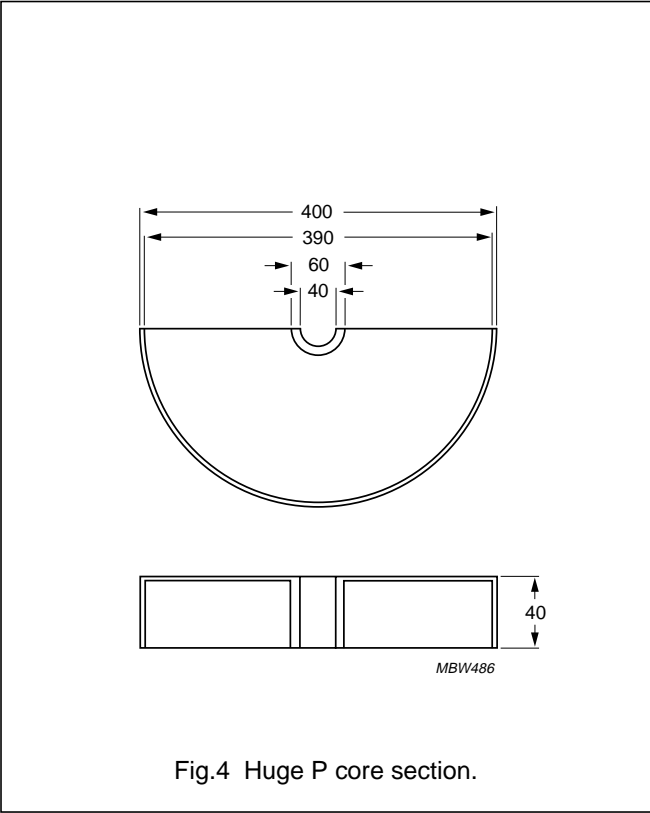


Fig.3 Quarter part of an ETD150 core set.

Machined Ferrites

Survey



Machined Ferrites

Survey




DATA SHEET STATUS DEFINITIONS

DATA SHEET STATUS	PRODUCT STATUS	DEFINITIONS
Preliminary specification	Development	This data sheet contains preliminary data. Philips Components reserves the right to make changes at any time without notice in order to improve design and supply the best possible product.
Product specification	Production	This data sheet contains final specifications. Philips Components reserves the right to make changes at any time without notice in order to improve design and supply the best possible product.

DISCLAIMER

Life support applications — These products are not designed for use in life support appliances, devices, or systems where malfunction of these products can reasonably be expected to result in personal injury. Philips Components customers using or selling these products for use in such applications do so at their own risk and agree to fully indemnify Philips Components for any damages resulting from such application.

PRODUCT STATUS DEFINITIONS

STATUS	INDICATION	DEFINITION
Prototype		These are products that have been made as development samples for the purposes of technical evaluation only. The data for these types is provisional and is subject to change.
Design-in		These products are recommended for new designs.
Preferred		These products are recommended for use in current designs and are available via our sales channels.
Support		These products are not recommended for new designs and may not be available through all of our sales channels. Customers are advised to check for availability.