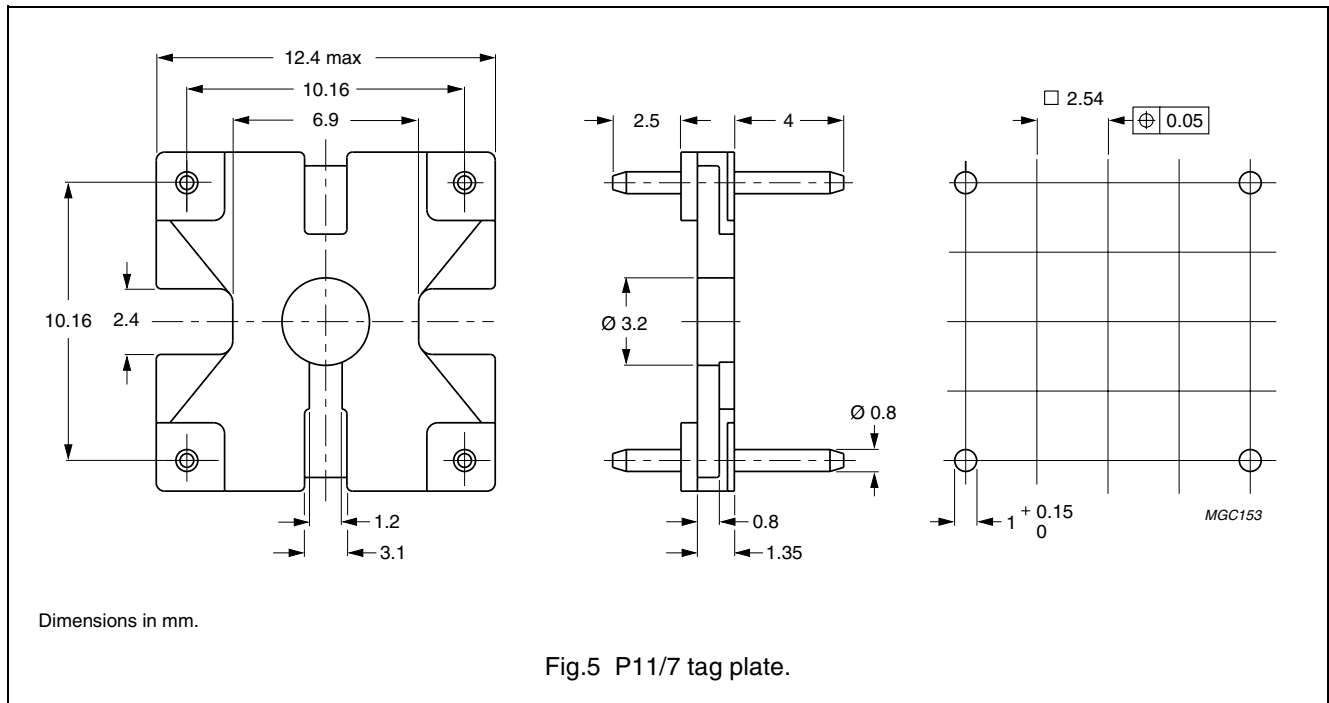
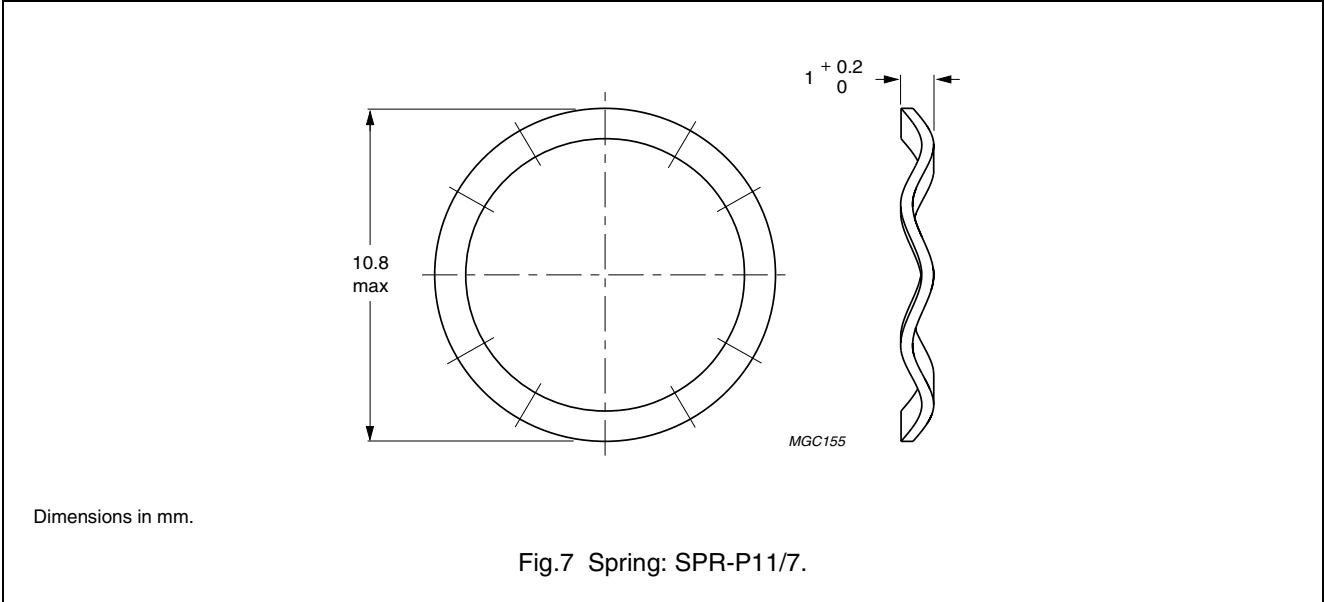
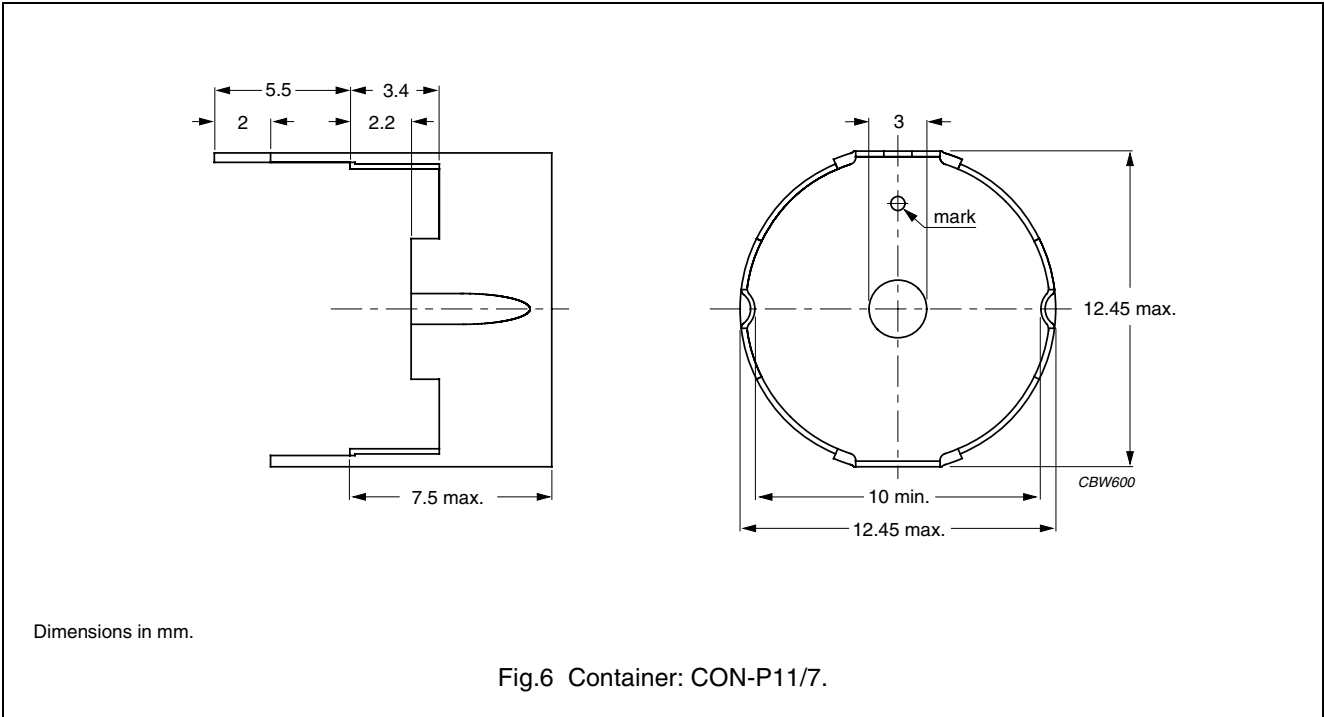


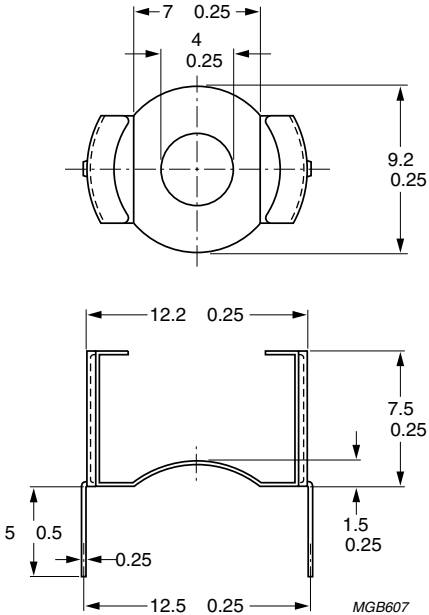
MOUNTING PARTS

General data

| ITEM | REMARKS | FIGURE | TYPE NUMBER |
|-----------|---|--------|--------------|
| Tag plate | material: phenolformaldehyde (PF), glass reinforced | 5 | TGP-P11/7-4P |
| | flame retardant: in accordance with "UL 94V-0"; file number E167521(M) | | |
| | maximum operating temperature: 180 C, "IEC 60085", class H | | |
| | pins: copper-tin alloy (CuSn), tin-lead alloy (SnPb) plated | | |
| | resistance to soldering heat in accordance with "IEC 60068-2-20", Part 2, Test Tb, method 1B: 350 C, 3.5 s | | |
| | solderability in accordance with "IEC 60068-2-20", Part 2, Test Ta, method 1: 235 C, 2 s | | |
| Container | copper-zinc alloy (CuZn), SnPb-plated | 6 | CON-P11/7 |
| | earth pins: presoldered | | |
| Spring | CrNi-steel | 7 | SPR-P11/7 |
| | spring force: 35 N when mounted | | |
| Clamp | spring steel, tin-plated | 8 | CLM/TP-P11/7 |







Dimensions in mm.

Fig.8 Clamp: CLM/TP-P11/7.